

# United Republic of Tanzania

## MIGRATION PROFILES

### Part I. Global legal instruments related to international migration

#### States parties to United Nations legal instruments

**Year ratified:**

1964	1949 ILO Migration for Employment Convention
1964	1951 Refugee Convention
1968	1967 Refugee Protocol
-	1975 ILO Migrant Workers Convention

**Year ratified:**

1991	1989 Conv. on the Rights of the Child
-	1990 UN Migrant Workers Convention
2006	2000 Human Trafficking Protocol
2006	2000 Migrant Smuggling Protocol

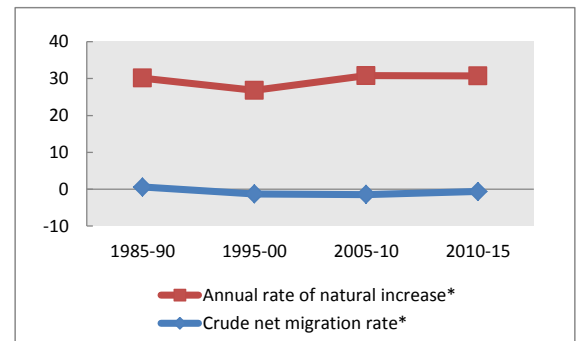
### Part II. Population indicators

#### Population estimates

	1990	2000	2010	2013
Males ('000)	12 621	16 916	22 475	24 629
Females ('000)	12 864	17 105	22 498	24 624
Total ('000)	25 485	34 021	44 973	49 253
Percentage urban population	19	22	26	28
Percentage rural population	81	78	74	72

	1985-90	1995-00	2005-10	2010-15
Average annual rate of change	3.08	2.55	2.94	3.02
Annual rate of natural increase*	30.14	26.78	30.78	30.71
Crude net migration rate*	0.58	-1.29	-1.43	-0.62
Total net migration ('000)	68	-206	-300	-150

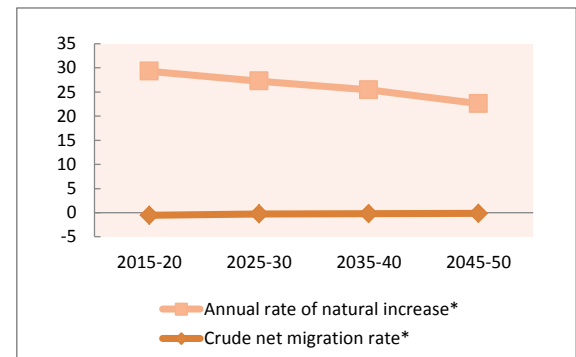
\* Per 1,000 population



#### Projected change in total population by component (x 1000)

	2015-20	2025-30	2035-40	2045-50
Total population at end of period	60 385	79 354	102 686	129 417
Population change during period	8095	10025	12179	13727
Annual rate of natural increase*	29.27	27.24	25.42	22.56
Crude net migration rate*	-0.53	-0.27	-0.21	-0.16

\* Per 1,000 population



#### Projected change in working-age (15-64) population (x 1000)

	2015-20	2025-30	2035-40	2045-50
Medium variant	4679	6503	7802	9289
Zero-migration variant	4779	6616	7948	9470
Difference	-101	-113	-146	-181

### Part III. Development indicators

#### Development indicators (years are approximate for some indicators / countries)

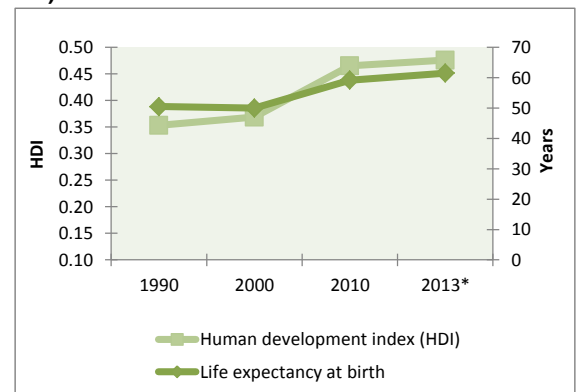
	1990	2000	2010	2013*
Life expectancy at birth	50.5	50.0	59.2	61.5
Adult literacy rate (ages 15 and older)	59.1	69.4	67.8	..
Combined gross enrolment ratio in education (per cent)	34.6	33.1	57.5	56.6
GDP per capita (PPP in thousands of US dollars)	620	770	1 430	1 601
Human development index (HDI)	0.35	0.37	0.47	0.48

\* 2013 or latest available

#### Remittances (years are approximate for some indicators / countries)

	1990	2000	2010	2012*
Inflows (millions of US dollars)	..	8	55	75
Outflows (millions of US dollars)	..	20	62	116
Inflows as a share of GDP (%)	..	0.1	0.2	0.3

\* Estimate



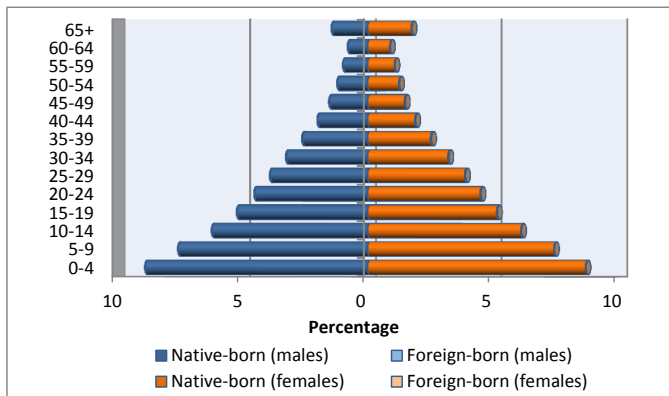
# United Republic of Tanzania

## Part IV. International migrant stocks

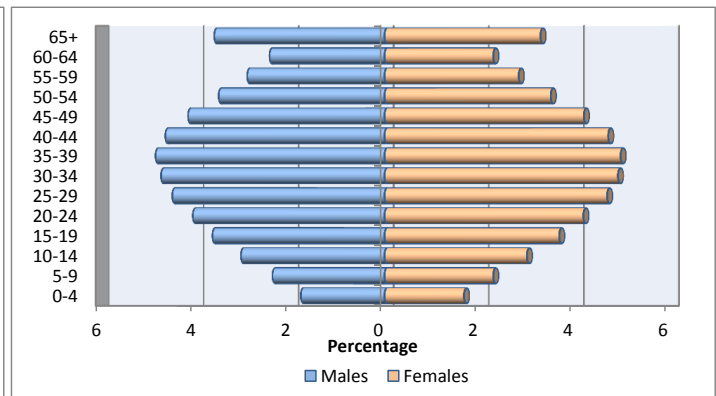
### International migrant stock by age and sex

	1990			2000			2013		
	Male	Female	Total	Male	Female	Total	Male	Female	Total
0-4	20 928	20 284	41 212	29 724	29 140	58 864	5 504	5 220	10 724
5-9	21 963	21 797	43 760	32 685	32 878	65 563	7 371	7 144	14 515
10-14	23 889	24 319	48 208	36 805	38 006	74 811	9 445	9 358	18 803
15-19	25 349	26 627	51 976	39 483	41 767	81 250	11 319	11 482	22 801
20-24	27 923	29 666	57 589	43 960	46 789	90 749	12 614	13 070	25 684
25-29	29 271	30 272	59 543	46 945	48 920	95 865	13 968	14 631	28 599
30-34	27 924	27 618	55 542	46 682	46 912	93 594	14 707	15 344	30 051
35-39	22 794	21 825	44 619	41 747	40 677	82 424	15 069	15 519	30 588
40-44	17 897	16 895	34 792	34 588	32 972	67 560	14 423	14 705	29 128
45-49	14 762	13 622	28 384	27 427	25 490	52 917	12 927	13 102	26 029
50-54	13 327	11 816	25 143	22 725	20 323	43 048	10 914	10 926	21 840
55-59	12 064	10 161	22 225	19 845	16 950	36 795	9 032	8 820	17 852
60-64	15 149	12 221	27 370	20 736	16 928	37 664	7 563	7 147	14 710
65+	18 983	14 679	33 662	26 428	20 648	47 076	11 203	10 251	21 454
<b>Total</b>	<b>292 223</b>	<b>281 802</b>	<b>574 025</b>	<b>469 780</b>	<b>458 400</b>	<b>928 180</b>	<b>156 059</b>	<b>156 719</b>	<b>312 778</b>

Total population by age and sex, 2013



Migrant stock by age and sex, 2013



### Migrant stock by origin (2013)

Top 5 countries or areas of origin	Total
Burundi	128 173
Democratic Republic of the Congo	62 070
Kenya	27 481
Congo	24 767
Mozambique	19 948
<b>Total</b>	<b>262 439</b>

### Migrant stock by destination (2013)

Top 5 countries or areas of destination	Total
Rwanda	45 373
Kenya	32 441
United Kingdom of Great Britain and Northern Ireland	31 108
Uganda	25 093
Burundi	24 851
<b>Total</b>	<b>158 866</b>

### Refugee population by origin (end 2012)

Top 5 countries or areas of origin	Total
Democratic Republic of the Congo	63 330
Burundi	35 343
<b>Total</b>	<b>98 673</b>

### Refugee population by destination (end 2012)

Top 5 countries or areas of destination	Total
<b>Total</b>	

### Tertiary students by origin (2013)

Top 5 countries or areas of origin	Total
<b>Total</b>	

### Tertiary students by destination (2013)

Top 5 countries or areas of destination	Total
United Kingdom of Great Britain and Northern Ireland	998
United States of America	987
India	716
South Africa	459
Australia	171
<b>Total</b>	<b>3 331</b>

## DEFINITIONS AND SOURCES

**States parties to United Nations legal instruments** : Indicates whether a country has ratified the relevant international instrument and if so, the year of ratification. The relevant instruments are the 1951 Convention relating to the Status of Refugees; the 1967 Protocol relating to the Status of Refugees, and the 1990 International Convention on the Protection of the Rights of All Migrant Workers and Members of their Families. In addition, two Protocols relevant to international migration supplement the United Nations Convention against Transnational Organized Crime, namely the 2000 Protocol to Prevent, Suppress and Punish Trafficking in Persons, Especially Women and Children and the 2000 Protocol against the Smuggling of Migrants by Land, Sea and Air. **Source** : United Nations Treaty Collection. See: <http://treaties.un.org>.

**Males**: De facto male population as of 1 July of the year indicated. Data are presented in thousands. **Source**: United Nations, Department of Economic and Social Affairs, Population Division (2013). World Population Prospects: The 2012 Revision.

**Females**: De facto female population as of 1 July of the year indicated. Data are presented in thousands. **Source**: United Nations, Department of Economic and Social Affairs, Population Division (2013). World Population Prospects: The 2012 Revision.

**Total population**: De facto population in a country, area or region as of 1 July of the year indicated. Figures are presented in thousands. **Source**: United Nations, Department of Economic and Social Affairs, Population Division (2013). World Population Prospects: The 2012 Revision.

**Percentage urban population**: Urban population as a percentage of the total population. **Source**: United Nations, Department of Economic and Social Affairs, Population Division (2012). World Urbanization Prospects: The 2011 Revision.

**Percentage rural population**: Rural population as a percentage of the total population. **Source**: United Nations, Department of Economic and Social Affairs, Population Division (2012). World Urbanization Prospects: The 2011 Revision.

**Annual rate of change**: Average exponential rate of growth of the population over a given period. It is expressed as a percentage. **Source**: United Nations, Department of Economic and Social Affairs, Population Division (2013). World Population Prospects: The 2012 Revision.

**Annual rate of natural increase**: Crude birth rate minus the crude death rate. Represents the portion of population growth (or decline) determined exclusively by births and deaths. **Source**: United Nations, Department of Economic and Social Affairs, Population Division (2013). World Population Prospects: The 2012 Revision.

**Crude net migration rate**: The ratio of net migration during the year to the average population in that year. The value is expressed per 1 000 inhabitants. **Source**: United Nations, Department of Economic and Social Affairs, Population Division (2013). World Population Prospects: The 2012 Revision.

**Total net migration**: Net number of migrants, that is, the number of immigrants minus the number of emigrants. It is expressed in thousands. **Source**: United Nations, Department of Economic and Social Affairs, Population Division (2013). World Population Prospects: The 2012 Revision.

**Total population at end of period**: Total population on 30 June of the final year of the period. Data are from the medium variant (see below) of the World Population Prospects. **Source**: United Nations, Department of Economic and Social Affairs, Population Division (2013). World Population Prospects: The 2012 Revision.

**Population change during period**: Total population change over a period, that is, the difference between the population at the end of the period and that at the beginning of the period. **Source**: United Nations, Department of Economic and Social Affairs, Population Division (2013). World Population Prospects: The 2012 Revision.

**Medium variant**: The medium projection variant combines the medium fertility assumption together with normal-mortality and normal international migration assumptions and is a central reference for trends over the longer term that results from the probabilistic approach that simulates future fertility paths for each country. **Source**: United Nations, Department of Economic and Social Affairs, Population Division (2013). World Population Prospects: The 2012 Revision.

**Zero-migration variant**: Under this assumption, the medium variant is modified so that international migration for each country is set to zero starting in 2010-2015. **Source**: United Nations, Department of Economic and Social Affairs, Population Division (2013). World Population Prospects: The 2012 Revision.

**Life expectancy at birth**: Number of years a newborn infant could expect to live if prevailing patterns of age-specific mortality rates at the time of birth stay the same throughout the infant's life. **Source**: United Nations, Department of Economic and Social Affairs, Population Division (2013). World Population Prospects: The 2012 Revision.

**Adult literacy rate**: The percentage of population aged 15 years and older who can both read and write with understanding a short simple statement on his/her everyday life. Generally, 'literacy' also encompasses 'numeracy', the ability to make simple arithmetic calculations. **Source**: United Nations Educational, Scientific and Cultural Organization. Institute for Statistics (2012). <http://stats.uis.unesco.org>

**Combined gross enrolment ratio in education**: Total enrolment in a specific level of education, regardless of age, expressed as a percentage of the eligible official school-age population corresponding to the same level of education in a given school year. For the tertiary level, the population used is that of the five-year age group following on from the secondary school leaving. **Source**: United Nations Educational, Scientific and Cultural Organization. Institute for Statistics (2012). <http://stats.uis.unesco.org>

**GDP per capita (PPP in USD)**: Gross domestic product converted to international dollars using purchasing power parity rates. An international dollar has the same purchasing power over GDP as the U.S. dollar has in the United States. GDP at purchaser's prices is the sum of gross value added by all resident producers in the economy plus any product taxes and minus any subsidies not included in the value of the products. It is calculated without making deductions for depreciation of fabricated assets or for depletion and degradation of natural resources. Data are in current international dollars. **Source**: World Development Indicators - World Bank (2013).



**Human development index (HDI):** A composite measure of achievements in three basic dimensions of human development—a long and healthy life, access to education and a decent standard of living. For ease of comparability, the average value of achievements in these three dimensions is put on a scale of 0 to 1, where greater is better, and these indicators are aggregated using geometric means. **Source:** United Nations Development Program (2013). Human Development Report Office.

**Remittances:** Remittances are defined as the sum of workers' remittances, compensation of employees, and migrants' transfers. Regional aggregates were calculated by the United Nations Population Division. All data are reported in current U.S. dollars. Remittance **inflows** refer to the sum of workers' remittances, compensation of employees and migrants' transfers received by the country of enumeration, while **outflows** refer to remittance outflows by the country of enumeration. **Source:** World Bank staff calculation based on data from IMF Balance of Payments Statistics Yearbook 2012 and data releases from central banks, national statistical agencies, and World Bank country desks.

**Remittance inflows as share of GDP:** **Source:** World Bank staff calculation based on data from IMF Balance of Payments Statistics Yearbook 2012 and data releases from central banks, national statistical agencies, and World Bank country desks.

**International migrant stock by age and sex:** The mid-year (1 July) estimate of the number of people living in a country or area other than that in which they were born. If the number of foreign-born was not available, the estimate refers to the number of people living in a country other than that of their citizenship. **Source:** United Nations, Department of Economic and Social Affairs, Population Division (2013). Trends in International Migrant Stock: The 2013 Revision (United Nations database, POP/DB/MIG/Stock/Rev.2013). See: [www.unmigration.org](http://www.unmigration.org)

**Migrant stock by origin (2013):** The five countries from which the largest numbers of migrants originate for the reporting country. **Source:** United Nations, Department of Economic and Social Affairs, Population Division (2013). Trends in International Migrant Stock: The 2013 Revision (United Nations database, POP/DB/MIG/Stock/Rev.2013).

**Migrant stock by destination (2013):** The five countries in which the largest numbers of migrants originating from reporting country reside. **Source:** United Nations, Department of Economic and Social Affairs, Population Division (2013). Trends in International Migrant Stock: The 2013 Revision (United Nations database, POP/DB/MIG/Stock/Rev.2013).

**Refugee population by origin (end 2012):** Persons by country of origin who are recognized as refugees under the 1951 Convention relating to the Status of Refugees and its 1967 Protocol or under the 1969 Organization of African Unity Convention Governing the Specific Aspects of Refugee Problems in Africa; those granted refugee status in accordance with the United Nations High Commissioner for Refugees (UNHCR) Statute; those granted humanitarian status or temporary protection by the State in which they find themselves; those in refugee-like situations; and Palestinian refugees registered with UNRWA. **Source:** UNHCR (2013). 2012 Global Trends: Refugees, Asylum-seekers, Returnees, Internally Displaced and Stateless Persons. See: [www.unhcr.org/statistics](http://www.unhcr.org/statistics).

**Refugee population (destination) (end 2012):** Persons by country of destination who are recognized as refugees under the 1951 Convention relating to the Status of Refugees and its 1967 Protocol or under the 1969 Organization of African Unity Convention Governing the Specific Aspects of Refugee Problems in Africa; those granted refugee status in accordance with the United Nations High Commissioner for Refugees (UNHCR) Statute; those granted humanitarian status or temporary protection by the State in which they find themselves; those in refugee-like situations; and Palestinian refugees registered with UNRWA. **Sources:** UNHCR (2013). 2012 Global Trends: Refugees, Asylum-seekers, Returnees, Internally Displaced and Stateless Persons. See: [www.unhcr.org/statistics](http://www.unhcr.org/statistics).

**Tertiary students:** Student population by **country of origin and destination** enrolled in programmes with an educational content more advanced than what is offered at ISCED levels 3 and 4. The first stage of tertiary education, ISCED level 5, covers level 5A, composed of largely theoretically based programmes intended to provide sufficient qualifications for gaining entry to advanced research programmes and professions with high skill requirements; and level 5B, where programmes are generally more practical, technical and/or occupationally specific. The second stage of tertiary education, ISCED level 6, comprises programmes devoted to advanced study and original research, and leading to the award of an advanced research qualification. **Source:** United Nations Educational, Scientific and Cultural Organization. Institute for Statistics (2012). <http://stats.uis.unesco.org>